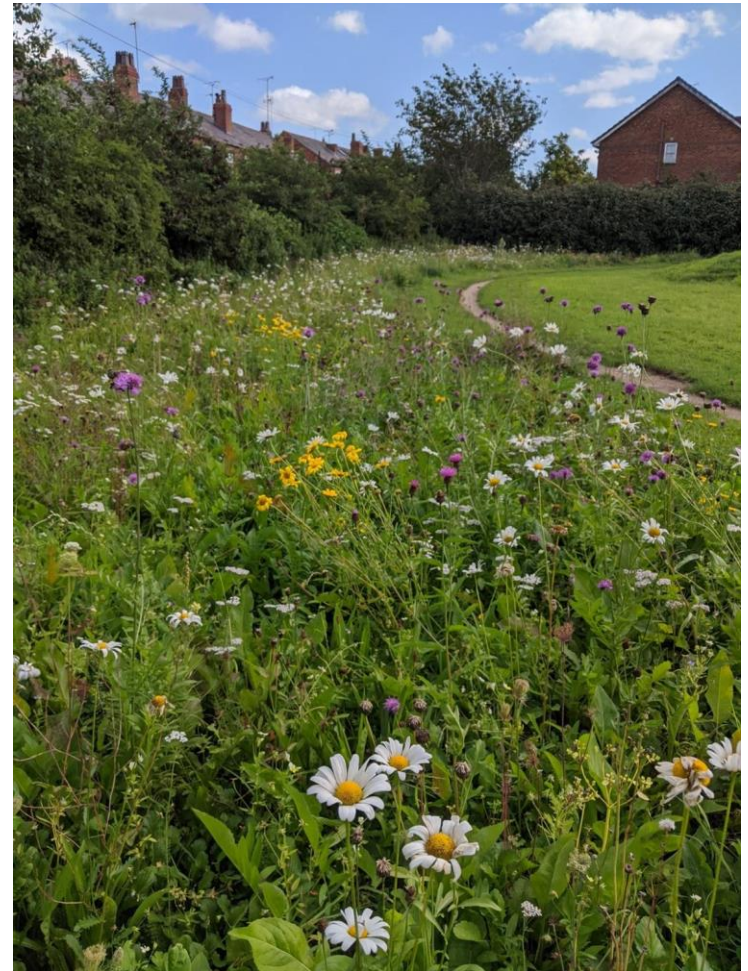
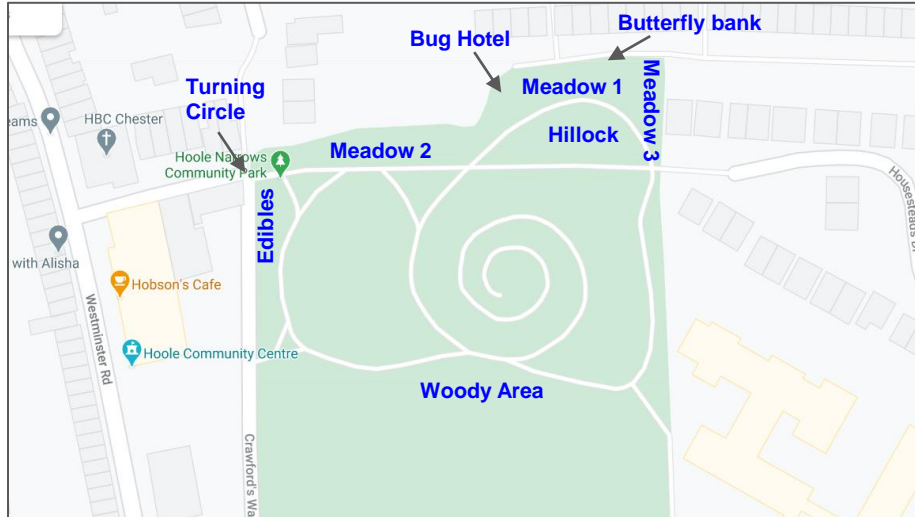


The Narrows

March 2024



The Narrows, Hoole

Meadow 1:

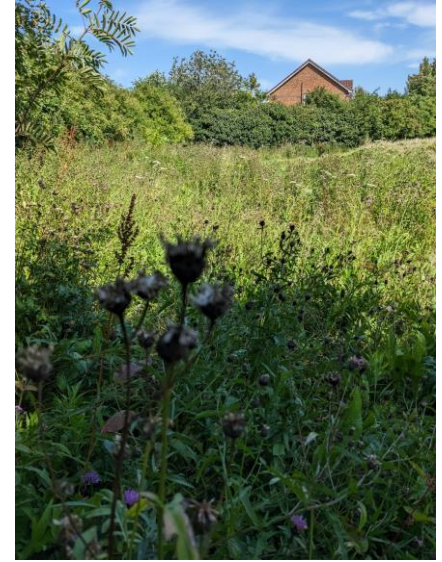
>40 species in 2023

Meadow 2 & 3:

- beginning to take hold, >35 species

Rare, endangered, unusual species seeded

2 Bat boxes (zoo) + 4 bird boxes (council) installed



Spreading bellflower



Edible Area & Woody Area

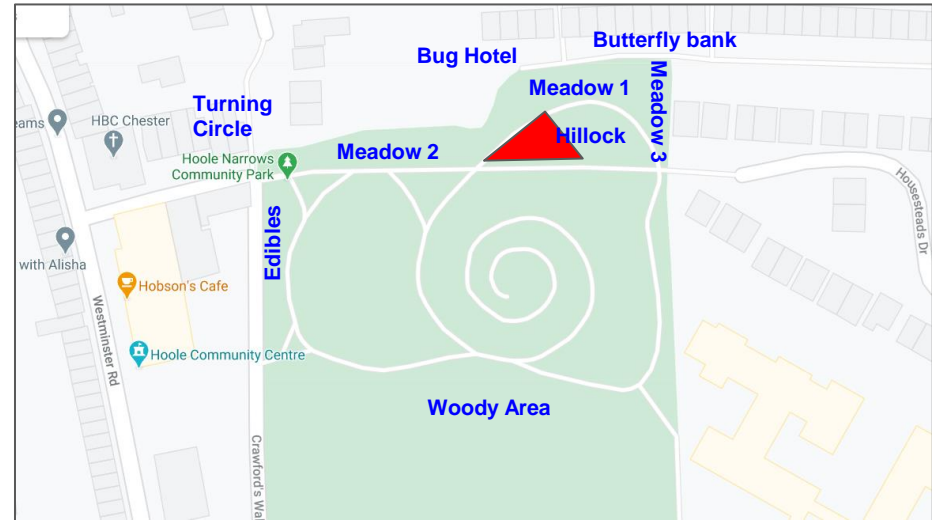
- **Planters Installed in June 22:**
2nd successful year; good engagement with users in the park
- **Bushes & trees established:** Blackthorn, Sea Buckthorn, Quince, Blackcurrants, Gooseberries, Crab Apple, Greengage, Mulberry, Rosemary
- **Woody area:**
 - Wild garlic, water avens, celandine, native bluebells, wood anenomes
 - Dead-hedge built using coppiced wood



Council input

- Removal of sycamore trees along back of M1
- Removal of 2 dead trees & leaning tree along back of M2
- CWAC offered to develop another meadow area (Bees & Butterfly mix ex Boston Seeds) seeded in Sept 23

New area approx doubles size of meadows in park



Other News

- Likely to have hedgehogs in the park (Chester Zoo camera survey from 2 local gardens)
- Lord Mayor of Chester Biodiversity Prize - 1st prize
- RHS Britain in Bloom - Its Your Neighbourhood Award - Level 5 - Outstanding
- Social media via “Friends of Hoole Parks” Facebook site >720 followers (c.f. 450 in 2019); volunteers across diff groups & parks

- **Harvesting wildflower seeds & sharing with other sites across Chester**

- **Funds:**
 - 2020: initial seed mix bought by Council via Councillors discretionary fund
 - 2021: £200 GBP from Coop Community Fund
 - 2022: £200 GBP from local resident; >£2000 from Postcode Lottery (planters)
 - 2023: £110 Nature Corridor Recovery Funds ex Chester Zoo, £100 from local resident, £100 from Lord Mayor prize

2024 Plan

- Develop distinctive wildflower areas in the park; strengthen all meadows incl council one
- Add to the rare & endangered plantings; build on hemiparasitic planting experiments
- Continue with rolling programme of coppicing of trees
- Harvesting wildflower seeds & sharing with other sites across Chester; controlling dominant species (ox-eye daisies, knapweed)

Red Bartsia & eyebright mix

field cow wheat

Spiked rampion

Field Gentian

Deptford Pink

Sainfoin

Vervain (verbena Officialis)

Sanicle (sanilcula European)

Wild Liquorice

Wild mignonette

Soapwort

Sawwort

forking larkspur

autumn gentian

spreading bellflower

spring gentian

bath asparagus

horseshoe vetch